

Isotech for Custom Designed Inserts

Isotech can design and manufacture custom Dry Block Inserts to meet your calibration requirements.

Contact us for a Free Consultation.

It is important that probes fit correctly into inserts, Euramet Technical Guide 13 states, "at most 0.5 mm larger than the outside diameter of the thermometer to be calibrated". We can machine inserts to your requirements. We recommend keeping all pockets on the same pitch, and at the recommended depth for the particular product.

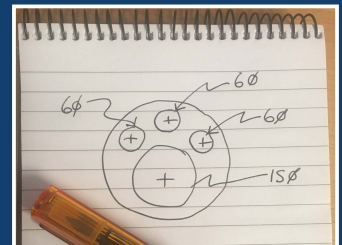
Send us a simple sketch or list of probes required to fit the special insert and we will design the perfect special insert for your use.

- 1 Determine the **Insert Diameter (A)** of the Unit and the maximum **Hole Depth (B)** by visiting the Isotech web site or by sending an enquiry to info@isotech.co.uk

JUPITER 4852 SERIES

| PRODUCT DESCRIPTION | TECH-SPEC | VIDEO | DOWNLOADS |
|---------------------|--|-------|-----------|
| Accessories | Super 4852 | | |
| Calibration Volume | 35mm diameter by 148mm deep | | |
| Standard Insert | 6 pockets, 2 x 4.5mm, 2 x 6.4mm, 1 x 8.0mm, 1 x 9.5mm diameter, all 140mm deep | | |

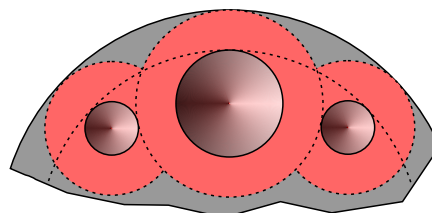
www.isotech.co.uk



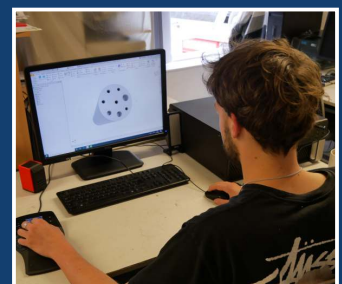
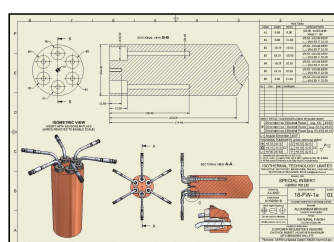
Our 3D CAD designers will produce the design and drawings for your approval before manufacture in our machine shop.

- 2 Determine hole diameters, number of holes and hole depths, ensure there is sufficient clearance for your probes, typically 0.2 to 0.5mm but this may depend on the tolerance of your probes. Note with all special inserts performance is unknown and may vary from our published specifications. The maximum hole size will vary with the number of pockets and the model type, the minimum size we offer for custom drilling is 3mm.

- 3 When designing an insert allow for a minimum of 3mm wall around each hole as shown in the sketch (shaded). The outer edge of each hole should be 3mm away from the outer diameter of the insert.



- 4 Email your requirements to info@isotech.co.uk and our CAD designers will draw up your insert and send you a drawing for approval before ordering.



Our on-site machine shop uses the latest CAD/CAM technology used by skilled machinists to ensure the quality of special inserts.



Contact us for a Free Consultation.

Telephone: +44(0)1704 543830 Email: info@isotech.co.uk

www.isotech.co.uk